



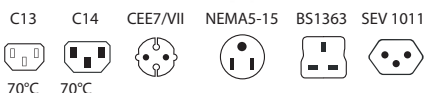
# IEC Inlet Locking System IL 13

## Power Cord with Locking System



- Locking system for standardized IEC C14 inlet
- No accidental disconnection
- Rated current up to 10A (C13 plug)
- Fits any SCHAFNER IEC C14 inlet filter
- Retrofit for any IEC C14 inlet
- Various power line plugs for international usage
- Standard and hospital grade plugs available

### Approvals



### Technical specifications

|                                            |                                                                                                                                                                                           |
|--------------------------------------------|-------------------------------------------------------------------------------------------------------------------------------------------------------------------------------------------|
| Maximum continuous operation voltage:      | 250VAC 50/60Hz                                                                                                                                                                            |
| Rated current:                             | 10A                                                                                                                                                                                       |
| High potential test voltage:               | P → PE 2000VAC (1min 50Hz)<br>P → N 2000VAC (1min 50Hz)                                                                                                                                   |
| Protection category:                       | IP20 according IEC 60529                                                                                                                                                                  |
| Temperature range (operation and storage): | -25°C to +70°C                                                                                                                                                                            |
| Cable:                                     | 2m; 3 x 1.00mm <sup>2</sup> ; H05 VV-F; 6 ft; 3 x 18AWG; SVT black; other lengths or colors on request                                                                                    |
| Connector (load side):                     | IEC C13 according to IEC/EN 60320-2-2 with IEC Lock UL 498, CSA C22.2 no. 42 (for cold conditions) pin temperature 70 °C, 10 A, Protection Class I                                        |
| Connector (line side):                     | IEC C14 according to IEC/EN 60320-2-2;<br>EU Schuko plug CEE7/VII; UK plug BS1363;<br>US NEMA5-15 plug standard or hospital grade (UL817);<br>CH plug SEV 1011;<br>Other plugs on request |
| Flammability corresponding to:             | Plugs: UL94V-2 or better; Cable: IEC 60332-1 Cat. F2                                                                                                                                      |

The locking system has a tensile force of typical 200N. It is recommended to use it with flange mount filters. For details refer to our Application Note „Using IEC Lock Power Cords with IEC Inlets and Filters“

### Features and benefits

Schaffner power cords with IEC lock guard against accidental disconnection of all electrical appliances with an IEC inlet. No exchange or modification of the IEC inlet or IEC inlet filter system is needed. Easy retrofit for all electronic equipments and devices.

- Power cord with locking system for IEC inlets
- Protection class I
- Suitable for use with any C14 IEC inlet
- Fits the complete Schaffner IEC inlet filter program with C14 IEC inlet
- Max. pin temperature 70°C

### Typical applications

- Data centers
- Industrial equipment
- Medical devices
- In-vitro diagnostic devices
- Broadcasting stations
- Mobile applications

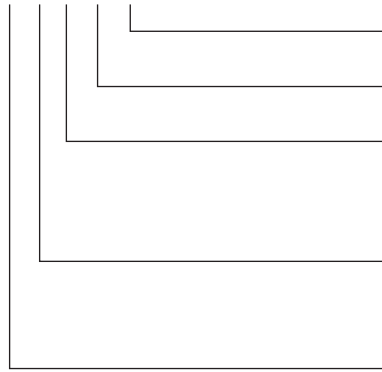
**Cable selection table**

|                        |                                                                                      |
|------------------------|--------------------------------------------------------------------------------------|
| IL13-C14-H05-3100-200  | IEC cable assembly with locking system for IEC C14 inlet, EU version                 |
| IL13-C14-SVT-3100-183  | IEC cable assembly with locking system for IEC C14 inlet, US version                 |
| IL13-EU1-H05-3100-200  | IEC cable assembly with locking system for IEC C14 inlet, EU version                 |
| IL13-US1-SVT-3100-183  | IEC cable assembly with locking system for IEC C14 inlet, US version                 |
| IL13-US2-SVT-3100-...* | IEC cable assembly with locking system for IEC C14 inlet, US version, hospital grade |
| IL13-UK1-H05-3100-200  | IEC cable assembly with locking system for IEC C14 inlet, UK version                 |
| IL13-CH1-H05-3100-200  | IEC cable assembly with locking system for IEC C14 inlet, CH version                 |

\* To compile a complete part number, please replace the -...- with the required length. This power cord is with 6ft. (-183) 9ft. (-275) and 12ft. (-366) deliverable.

**Product selector**

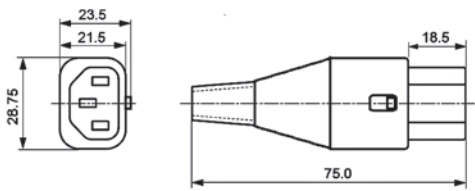
IL13-yyy-zzz-aaaa-bbb



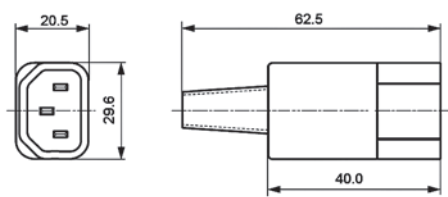
|      |                                                                   |
|------|-------------------------------------------------------------------|
| 183  | cable length 183cm (6ft)                                          |
| 200  | cable length 200cm (6ft 7in)                                      |
| 3100 | 3x1.0mm <sup>2</sup> (US: AWG18)                                  |
| H05  | cable type H05VV-F                                                |
| SVT  | cable type SVT                                                    |
| C14  | line side plug IEC C14 male, straight                             |
| EU1  | line side plug CEE7/VII, right angled                             |
| US1  | line side plug NEMA5-15, straight                                 |
| US2  | line side plug NEMA5-15, straight, hospital grade according UL817 |
| UK1  | line side plug BS1363, right angled, fused 5A                     |
| CH1  | line side plug SEV1011, straight                                  |
| IL13 | load side IEC C13 female plug, straight, lock                     |

**Mechanical data**

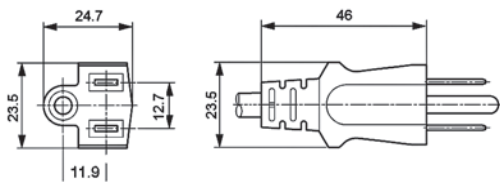
C13



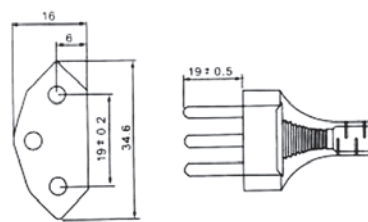
C14



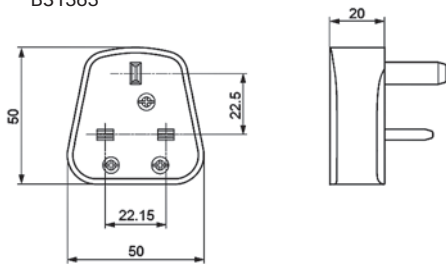
NEMA5-15



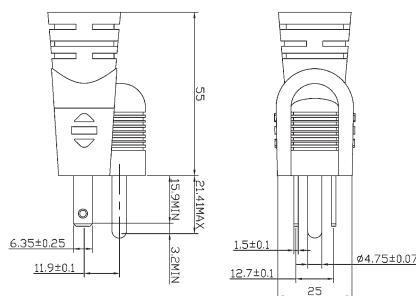
SEV1011



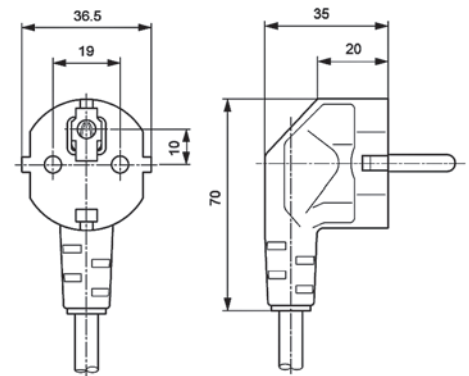
BS1363



NEMA5-15 (Hospital grade)



CEE7/VII



**Headquarters, global innovation  
and development center**

**Schaffner Group**  
Nordstrasse 11  
4542 Luterbach  
Switzerland  
T +41 32 681 66 26  
F +41 32 681 66 30  
info@schaffner.com  
www.schaffner.com

To find your local partner within  
Schaffner's global network, please go to  
[www.schaffner.com](http://www.schaffner.com)

© 2012 Schaffner Group  
Specifications are subject to change  
within notice. The latest version of the  
data sheets can be obtained from the  
website. All trademarks recognized.

Schaffner is an ISO-registered company.  
Its products are designed and  
manufactured under the strict quality  
and environmental requirements of  
the ISO 9001 and ISO 14001 standards.

This document has been carefully  
checked. However, Schaffner does not  
assume any liability for errors or  
inaccuracies.

**Sales and application centers**

**China**  
**Schaffner EMC Ltd. Shanghai**  
T20-3, No 565 Chuangye Road  
Pudong New Area  
Shanghai 201201  
T +86 21 3813 9500  
F +86 21 3813 9501 / 02  
cschina@schaffner.com  
www.schaffner.com

**Finland**  
**Schaffner Oy**  
Sauvonrinne 19 H  
08500 Lohja  
T +358 19 35 72 71  
F +358 19 32 66 10  
finlandsales@schaffner.com

**France**  
**Schaffner EMC S.A.S.**  
112, Quai de Bezons  
95103 Argenteuil  
T +33 1 34 34 30 60  
F +33 1 39 47 02 28  
francesales@schaffner.com

**Germany**  
**Schaffner Deutschland GmbH**  
Schoemperlenstrasse 12B  
76185 Karlsruhe  
T +49 721 56910  
F +49 721 569110  
germanysales@schaffner.com

**Italy**  
**Schaffner EMC S.r.l.**  
Via Galileo Galilei, 47  
20092 Cinisello Balsamo (MI)  
T +39 02 66 04 30 45/47  
F +39 02 61 23 943  
italysales@schaffner.com

**Japan**  
**Schaffner EMC K.K.**  
Mitsui-Seimei Sangenjaya Bldg. 7F  
1-32-12, Kamiyuma, Setagaya-ku  
Tokyo 154-0011  
T +81 3 5712 3650  
F +81 3 5712 3651  
japansales@schaffner.com  
www.schaffner.jp

**Singapore**  
**Schaffner EMC Pte Ltd.**  
Blk 3015A Ubi Road 1  
05-09 Kampong Ubi Industrial Estate  
T +65 6377 3283  
F +65 6377 3281  
singaporesales@schaffner.com

**Spain**  
**Schaffner EMC España**  
Calle Caléndula 93  
Miniparc III, Edificio E  
El Soto de la Moraleja  
Alcobendas  
28109 Madrid  
T +34 618 176 133  
spainsales@schaffner.com

**Sweden**  
**Schaffner EMC AB**  
Turebergstorg 1, 6  
19147 Sollentuna  
T +46 8 5792 1121 / 22  
F +46 8 92 96 90  
swedensales@schaffner.com

**Switzerland**  
**Schaffner EMV AG**  
Nordstrasse 11  
4542 Luterbach  
T +41 32 681 66 26  
F +41 32 681 66 41  
sales@schaffner.ch

**Taiwan**  
**Schaffner EMV Ltd.**  
6th Floor, No 413  
Rui Guang Road  
Neihu District  
Taipei City 114  
T +886 2 87525050  
F +886 2 87518086  
taiwansales@schaffner.com

**Thailand**  
**Schaffner EMC Co. Ltd.**  
Northern Region Industrial Estate  
67 Moo 4 Tambon Ban Klang  
Amphur Muang P.O. Box 14  
Lamphun 51000  
T +66 53 58 11 04  
F +66 53 58 10 19  
thailandsales@schaffner.com

**UK**  
**Schaffner Ltd.**  
5 Ashville Way  
Molly Millars Lane  
Wokingham  
Berkshire RG41 2PL  
T +44 118 9770070  
F +44 118 9792969  
uksales@schaffner.com  
www.schaffner.uk.com

**USA**  
**Schaffner EMC Inc.**  
52 Mayfield Avenue  
Edison, New Jersey 08837  
T +1 732 225 9533  
F +1 732 225 4789  
usasales@schaffner.com  
www.schaffner.com/us